

# The Weekly Bulletin

Inspire, Create, Discover, Together

## Covid Information Sharing

Like many schools across Bury, we continue to have incidents of both staff and children who have tested positive for covid and who are now isolating. **The school's role in sharing information regarding Covid has changed from this term. We are now no longer responsible for contact tracing in our setting and so we are not required/are unable to give any details regarding particular year groups affected or confirm individual cases; we are unable to share medical information about individuals which is classed as confidential.** We would, however, continue to strongly advise regular lateral flow testing and constant vigilance within your own families.

Please find a flowchart on the next page which is a reminder of the government guidance to follow should you have a suspected or positive case within your household.

If you need to report any suspected or positive cases over the weekend or at any time the school is closed, our out of hours email contact address is

[covidcontact@barrowcevcprimaryschool.co.uk](mailto:covidcontact@barrowcevcprimaryschool.co.uk)

## Harvest Collection

This Autumn we will be collecting items for the Storehouse Food-bank in Bury St. Edmunds as part of the school Harvest Festival. Our 'Barrow Big Idea' is Generosity this half term, so we'd love to give the children a chance to express that value.

Please bring one or more items into school next week. We will take some offerings down to the church on Wednesday as part of the Harvest service. Please ensure all food is in date. Here are some examples of the things needed most often:

- UHT Milk-
- Pot Noodles-
- Curry and Pasta Sauces-
- Tinned Meals-
- Tinned Vegetables-
- Tinned Desserts-
- Shampoo-
- Shower Gel-
- Toothbrushes and Toothpaste-

## Whole School Notices

- **Collections after school** - to limit the number of adults around the school site, if you are collecting from Barrow Extra or an after school club, please move off the school site immediately you have picked up your children. Thank you.
- **Harvest Service** - please come along to our Harvest Service on Wednesday, 29<sup>th</sup> September at 9.30am in the church.
- **Phonics Workshop** - The EYFS team will be running a phonics workshop for Reception and Year 1 parents on Wednesday, 29<sup>th</sup> September at 2.00pm in the hall. Please sign in at the front office.
- **Reception Parent Consultations** - These meetings will take place remotely via our digital platform, Schoolcloud, on Wednesday, 6<sup>th</sup> September. Please refer to the recent letter from the EYFS team with details of how to book your appointment.
- **FOBS Penny Trail** - don't forget to collect and send in pennies for this fun fundraiser due to take place in school on Thursday, 21<sup>st</sup> October.

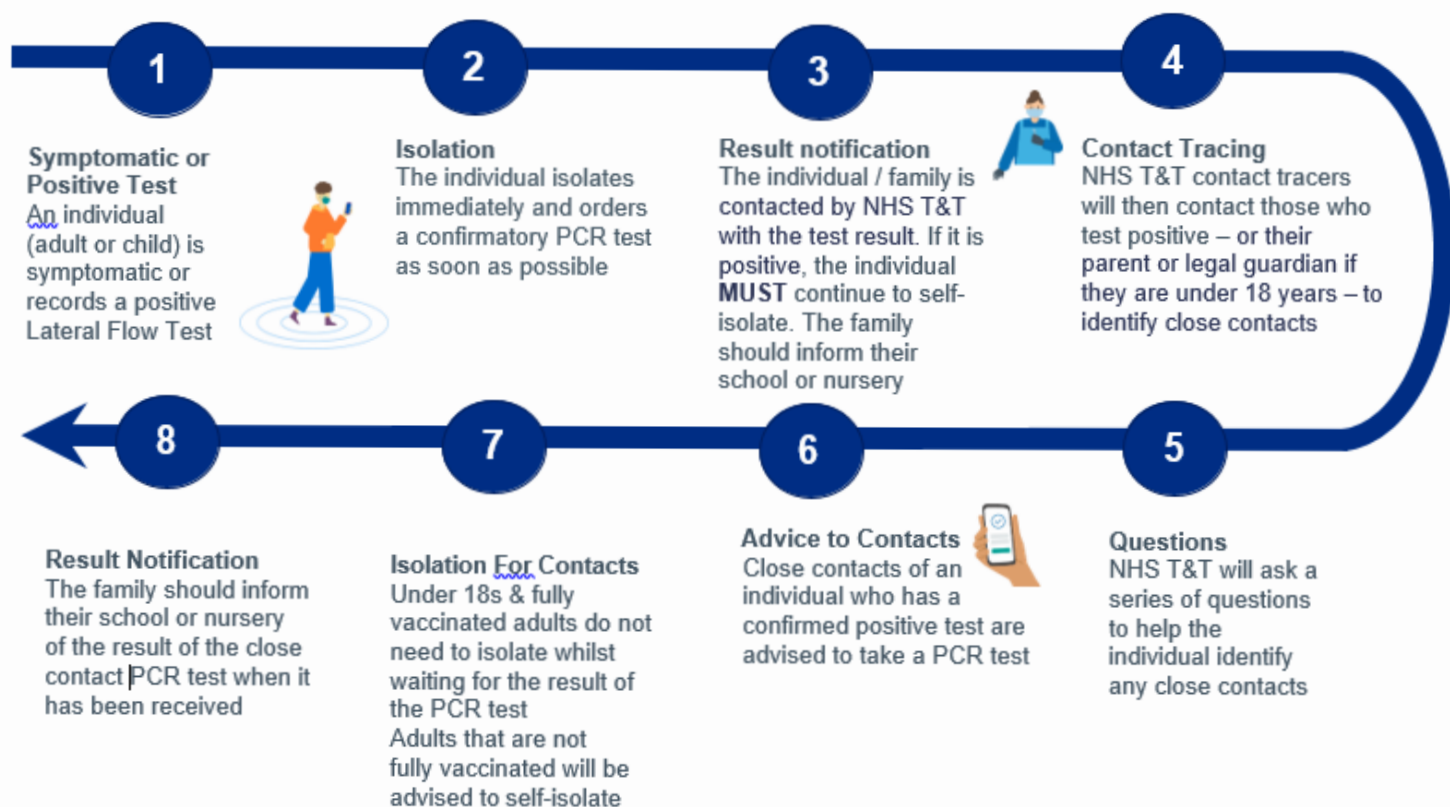
## Art Shirts for School

Our new art and design curriculum is already being enjoyed in all year groups across the school. There is an increased focus on the development of key skills and the use of a range of art mediums, including paint and charcoal.

**Please send into school an old oversized t-shirt or adult shirt that would be suitable for covering school uniform during art lessons. This applies to all children in Year 1 to Year 6. Thank you.**

# Isolation & Testing Guidance

Education and childcare settings – September 2021



## Settling In Reports

The start of the new school year is always exciting for staff as well as pupils. It's an important time, when we all settle into new routines and interesting new learning. Over the last few weeks, the staff have enjoyed getting to know the children in their new classes. As parents, we all like to know how our children have been getting on at school – especially when they have just started a new school year. The busy nature of the school week doesn't always allow teachers to catch up with parents in person as often as we would like. In the last couple of years, staff have written a brief 'settling in report' for each child, outlining how they had settled back in to school and their new class. As a result of very positive feedback from parents, we have decided once again to provide parents with this short written summary for all children in Years 1 to 6. **This brief report will be sent to you next week - Friday, 1<sup>st</sup> October - in the form of 'Settling in Report Slips'.**

Along with your report slip, you will also find a parents' reply section. Please do feel free to send in your comments and your own perspective on how your child has started in their new class. We're always glad to hear from you.

Whilst this seems the most efficient way of getting a brief summary to each family, it is by no means a replacement for conversations in person. Please be assured that appointments can be made with your child's class teacher, should you have any queries or need for further discussion at this or any other point in the school year. For parents of Reception children, a 'settling in' discussion will be part of the Reception Parents' Consultations in early October. Parent Consultations for the rest of the school will be happening later in November. All parent consultations this term will once again take place virtually via Schoolcloud.

## Cycle to School Week

As we celebrate the Women's Tour race coming to Suffolk, we want to encourage children, and adults, to get cycling too! We are holding an inter school competition between classes next week to see who can record the most number of minutes spent cycling or scooting in a week. You can cycle or scooter to school and class teachers will log children's activity by colouring in specially designed posters for each journey you cycle/scoot. Hopefully, as a class, children can make it all the way from Haverhill to Felixstowe! Please take pictures and get your child/children cycling as much as you can during the week.